

CAMDEN ESTATES

A WMV COMMUNITY



Developer: Shore Springs Partners, LLC

Builder: Raynen & Bardis Homes

02/28/2018



Floorplans and renderings are artist's conception and may contain options which are not standard on all models. WMV Communities reserves the right to make changes to these floorplans, specifications, dimensions, and elevations without prior notice. Stated dimensions and square footage are approximate and should not be used as representation of the home's precise or actual size. Map is not to scale. WMV Communities reserves the right to withdraw any offer at any time.

Residence A:

2,773 Sq ft, 4 bedroom 3 bath, 3 car garage



Elevation A1: French



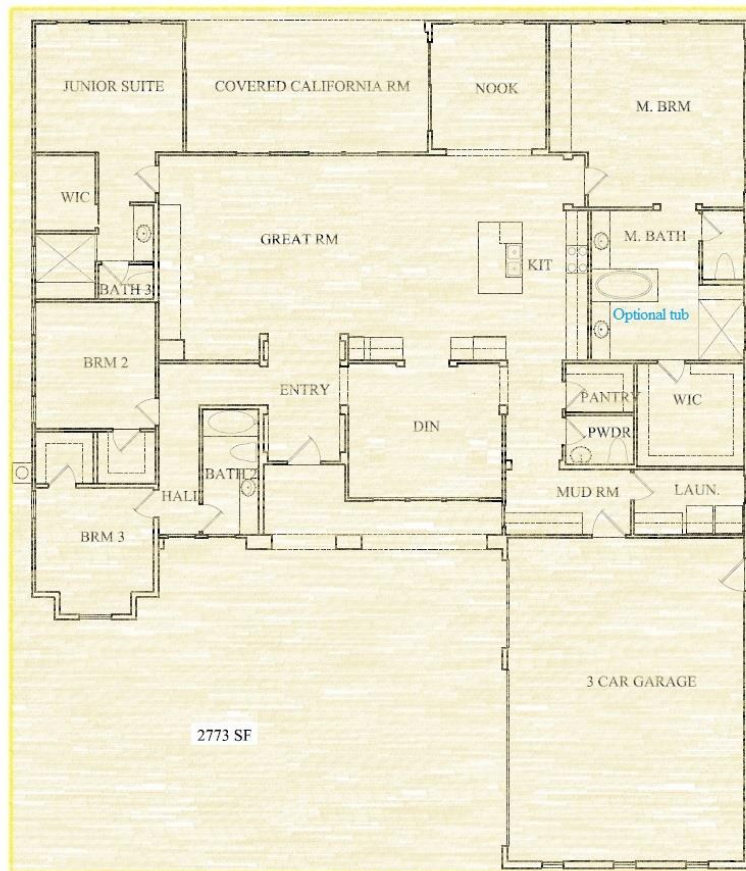
Elevation A2: Tuscan



Floorplans and renderings are artist's conception and may contain options which are not standard on all models. WMV Communities reserves the right to make changes to these floorplans, specifications, dimensions, and elevations without prior notice. Stated dimensions and square footage are approximate and should not be used as representation of the home's precise or actual size. Map is not to scale. WMV Communities reserves the right to withdraw any offer at any time.

Residence A

2,773 Sq ft, 4 bedroom 3 bath, 3 car garage



Floorplans and renderings are artist's conception and may contain options which are not standard on all models. WMV Communities reserves the right to make changes to these floorplans, specifications, dimensions, and elevations without prior notice. Stated dimensions and square footage are approximate and should not be used as representation of the home's precise or actual size. Map is not to scale. WMV Communities reserves the right to withdraw any offer at any time.

Residence B

2,653 Sq ft, 4 bedroom 3 bath, 3 car garage



Elevation B1: Modern



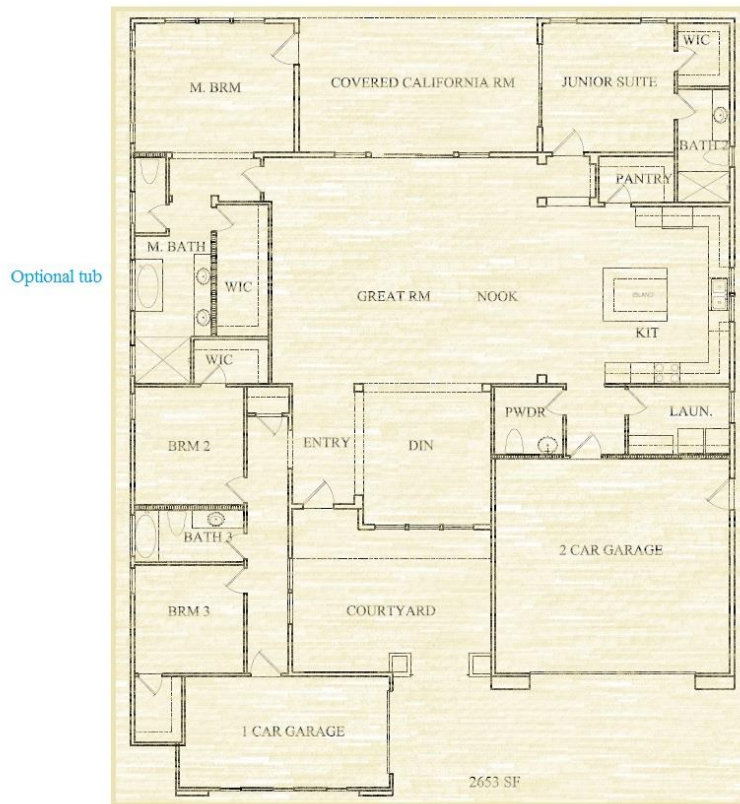
Elevation B2: Spanish



Floorplans and renderings are artist's conception and may contain options which are not standard on all models. WMV Communities reserves the right to make changes to these floorplans, specifications, dimensions, and elevations without prior notice. Stated dimensions and square footage are approximate and should not be used as representation of the home's precise or actual size. Map is not to scale. WMV Communities reserves the right to withdraw any offer at any time.

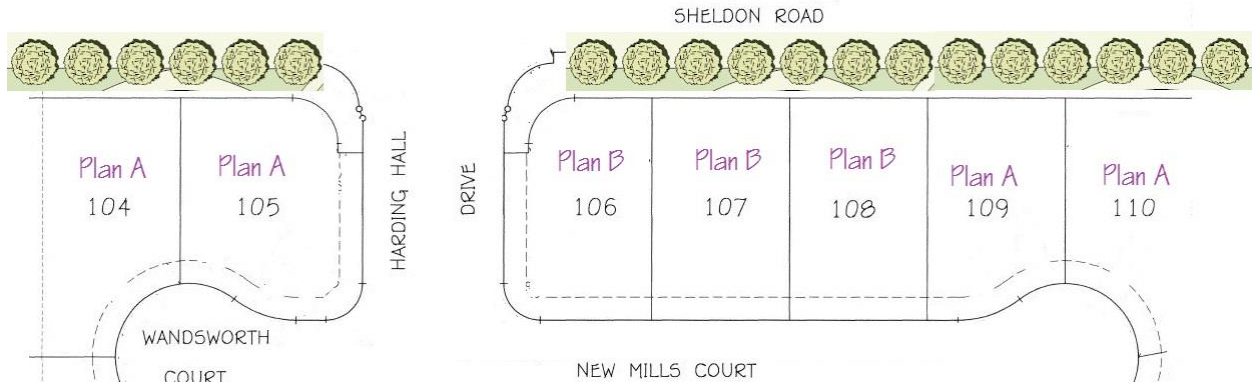
Residence B

2,653 Sq ft, 4 bedroom 3 bath, 3 car garage



Floorplans and renderings are artist's conception and may contain options which are not standard on all models. WMV Communities reserves the right to make changes to these floorplans, specifications, dimensions, and elevations without prior notice. Stated dimensions and square footage are approximate and should not be used as representation of the home's precise or actual size. Map is not to scale. WMV Communities reserves the right to withdraw any offer at any time.

Site Plan



Ann Fraire

916.416.3859

BRE Broker #01236464

shoresprings.com

RBHOMES.COM



Floorplans and renderings are artist's conception and may contain options which are not standard on all models. WMV Communities reserves the right to make changes to these floorplans, specifications, dimensions, and elevations without prior notice. Stated dimensions and square footage are approximate and should not be used as representation of the home's precise or actual size. Map is not to scale. WMV Communities reserves the right to withdraw any offer at any time.